

DH-IPC-HDW3541EM-AS-G

5MP Lite AI IR Fixed focal Eyeball Network Camera



Wiz Sense

- 5MP, 1/2.7" CMOS image sensor, low illuminance, high image definition
- Outputs max. 5MP (2592 × 1944) @20 fps
- H.265 codec, high compression rate, low bit rate
- Built-in IR LED, max. IR distance: 50 m
- ROI, SMART H.264+/H.265+, flexible coding, applicable to various bandwidth and storage environments
- Rotation mode, WDR, 3D DNR, HLC, BLC, digital watermarking, applicable to various monitoring scenes
- Intelligent detection: Intrusion, tripwire (Recognition of vehicle and human)
- Abnormality detection: Motion detection, video tampering, scene changing, audio detection, no SD card, SD card full, SD card error, network disconnection, IP conflict, illegal access, voltage detection
- Supports max. 256 G Micro SD card, built-in Mic
- 12V DC/POE power support
- IP67 protection
- SMD



System Overview

With advanced deep learning algorithm, Dahua Lite AI series network camera supports some intelligent functions, such as perimeter protection and smart motion detection. It adopts starlight solution, which makes a better image effect in low illuminance.

Functions

Smart (H.265+ & H.264+)

Adopting advanced algorithm of auto stream control according to the environment, Dahua smart encoding technology realizes the higher efficiency than (H.265 & H.264), providing high-quality video, and reducing the cost of storage and transmission.

Wide dynamic range (WDR)

Dahua adopts advanced Wide Dynamic Range (WDR) technology. You can get clear details in the environment of strong brightness contrast. In high brightness and back-light environment, bright region and dark region with strong light source, you can also get clear images.

Starlight

Dahua Starlight technology mainly applies to the environment of low illumination, and it can provide clear colorful video. Even in the environment of min. illumination, the technology can guarantee the good image effect.

Intelligent Video Analysis (IVS)

With advanced video algorithm, Dahua camera supports intelligent detection, such as tripwire and intrusion and so on.

Smart Motion Detection (SMD)

With intelligent algorithm, Dahua Smart Motion Detection technology can effectively recognize the target types, flitting the motion detection alarm triggered by non-concerned target types. It can realize effective and accurate alarm.

Protection (IP67, wide voltage)

IP67: The camera passes a series of strict test on dust and soak. It has dust-proof function, and the enclosure can works normal after soaking in 1 m deep water for 30 minutes.

Wide voltage: The camera allows $\pm 30\%$ input voltage tolerance (wide voltage range), and it is widely applied to outdoor environment with instable voltage.

Technical Specification					
Camera					
Image Sensor		1/2.7"5Megapixel progressive CMOS			
Effective Pixels		2592 (H) ×1944 (V)			
ROM		128 MB			
RAM		512 MB			
Scanning System		Progressive			
Electronic Shutter Speed		Auto/Manual 1/3 s–1/100000 s			
Min. Illumination		0.005 Lux@F1.6			
IR Distance		50 m (164.0 ft)			
IR On/Off Control		Auto/Manual			
IR LEDs Number		2 (IR LEDs)			
Pan/Tilt/Rotation Range		Horizontal: 0°–360°; vertical: 0°–78°; rotation: 0°–360°			
Lens					
Lens Type		Fixed focal			
Mount Type		M12			
Focal Length		2.8 mm; 3.6 mm; 6 mm			
Max. Aperture		F1.6			
Field of View		2.8 mm: Horizontal:98°; vertical: 72°; diagonal: 130° 3.6 mm: Horizontal:80°; vertical: 59° ; diagonal: 106° 6 mm: Horizontal:50°; vertical: 36°; diagonal: 64°			
Iris Type		Fixed aperture			
Close Focus Distance		2.8 mm: 0.9 m (3.0 ft) 3.6 mm: 1.6 m (5.3 ft) 6 mm: 3.2 m (10.5 ft)			
DORI Distance	Lens	Detect	Observe	Recognize	Identify
	2.8mm	56.0 m (183.7 ft)	22.4 m (73.5 ft)	11.2 m (36.8 ft)	5.6 m (18.4 ft)
	3.6mm	80.0 m (262.5 ft)	32.0 m (105.0 ft)	16.0 m (52.5 ft)	8.0 m (26.3 ft)
	6mm	120.0 m (393.7 ft)	48.0 m (157.5 ft)	24.0 m (78.7 ft)	12.0 m (39.4ft)
Professional, Intelligent					
Perimeter Protection		Tripwire; intrusion (Recognition of human and vehicle)			
Intelligent Search		Work together with Smart NVR to perform refine intelligent search, event extraction and merging to event videos			
Video					
Video Compression		H.265; H.264; H.264H; H.264B; MJPEG			
Smart Codec		Yes			
Video Frame Rate		Main stream (2592 × 1944@1–20 fps) (2688 × 1520@1–25/30 fps) sub stream (704 × 576@1–25 fps/704 × 480@1–30 fps) third stream (1280 × 720@1–25/30 fps)			
Stream Capability		3 streams			
Resolution		5M (2592 × 1944); 4M (2688 × 1520); 3M (2304 × 1296); 1080p (1920 × 1080); 1.3M (1280 × 960); 720p (1280 × 720); D1 (704 × 576/704 × 480); VGA (640 × 480); CIF (352 × 288/352 × 240)			

Bit Rate Control	CBR/VBR
Video Bit Rate	H.264: 3 Kbps–8192 Kbps H.265: 3 Kbps–8192 Kbps
Day/Night	Auto(ICR)/Color/B/W
BLC	Yes
HLC	Yes
WDR	120 dB
White Balance	Auto/natural/street lamp/outdoor/manual/regional custom
Gain Control	Auto/Manual
Noise Reduction	3D DNR
Motion Detection	OFF/ON (4 areas, rectangular)
Region of Interest(Roi)	Yes (4 areas)
Smart IR	Yes
Image Rotation	0°/90°/180°/270° (Support 90°/270° with 1920 × 1080 resolution.)
Mirror	Yes
Privacy Masking	4 areas
Audio	
Built-in MIC	Yes
Audio Compression	G.711a; G.711Mu; G726; AAC
Network	
Network	RJ-45 (10/100 Base-T)
Protocol	IPv4;IPv6;HTTP;HTTPS;TCP;UDP;ARP;RTP;RTSP;RTCP; RTMP;SMTP;FTP;SFTP;DHCP;DNS;DDNS;QoS;UPnP;NTP; Multicast;ICMP;IGMP;NFS;PPPoE;802.1x;SNMP
Interoperability	ONVIF(Profile S/Profile G);CGI;P2P;Milestone;Genetec
Scene Self-adaptation	Yes
User/Host	20 (Total bandwidth: 64M)
Edge Storage	FTP; SFTP; Micro SD Card (support max. 256 G); Dahua Cloud; NAS
Browser	IE: IE8, IE9, IE11 Chrome Firefox
Management Software	Smart PSS, DSS, DMSS
Mobile Phone	IOS; Android
Certification	
Certifications	CE-LVD: EN60950-1 CE-EMC: Electromagnetic Compatibility Directive 2014/30/EU FCC: 47 CFR FCC Part 15, Subpart B UL/CUL: UL60950-1 CAN/CSA C22.2 No.60950-1-07
Power	
Power Supply	12V DC/PoE (802.3af)
Power Consumption	<8.1W
Environment	
Operating Conditions	-40°C to +60°C (-40°F to +140°F)/less than≤95%

Storage Conditions	-40°C to +60°C (-40°F to +140°F)
Ingress Protection	IP67
Structure	
Casing	Metal
Dimensions	Φ106 mm × 93.6 mm (4.17" × 3.69")
Net Weight	0.55 kg (1.21 lb)
Gross Weight	0.71 kg (1.57 lb)

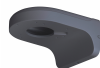
Ordering Information		
Type	Part Number	Description
5MP Camera	DH-IPC-HDW3541EMP-AS	5MP Lite AI IR Fixed focal Eyeball Network Camera, PAL
	DH-IPC-HDW3541EMN-AS	5MP Lite AI IR Fixed focal Eyeball Network Camera, NTSC
Accessories (optional)	PFA130-E	Junction Box
	PFB204W	Wall mount
	PFA152-E	Pole mount
	PFA151	Corner Mount
	PFA106	Mount Adapter
	PFB220C	Ceiling Mount
	PFM114	TLC SD card

Accessories

Optional:



PFA130-E-G
Junction Box



PFB203W-G
Wall Mount



PFA152-E
Pole Mount



PFB220C
Ceiling Mount



PFA106
Mount Adapter



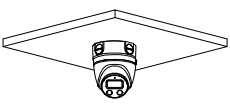
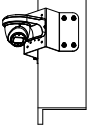
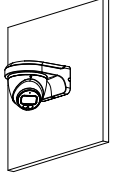
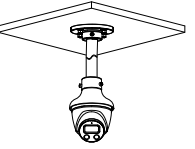
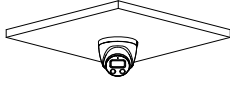
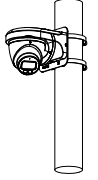
PFA151
Corner Mount



PFM114
TLC SD card



PFA139-G
Junction Box

Junction Mount	Corner Mount
PFA130-E	PFA151+PFB204W
	
Wall Mount	Ceiling Mount
PFB204W	PFA106+PFB220C
	
Ceiling Mount	Pole Mount
	PFB204W + PFA152-E
	

Dimensions (mm[inch])

